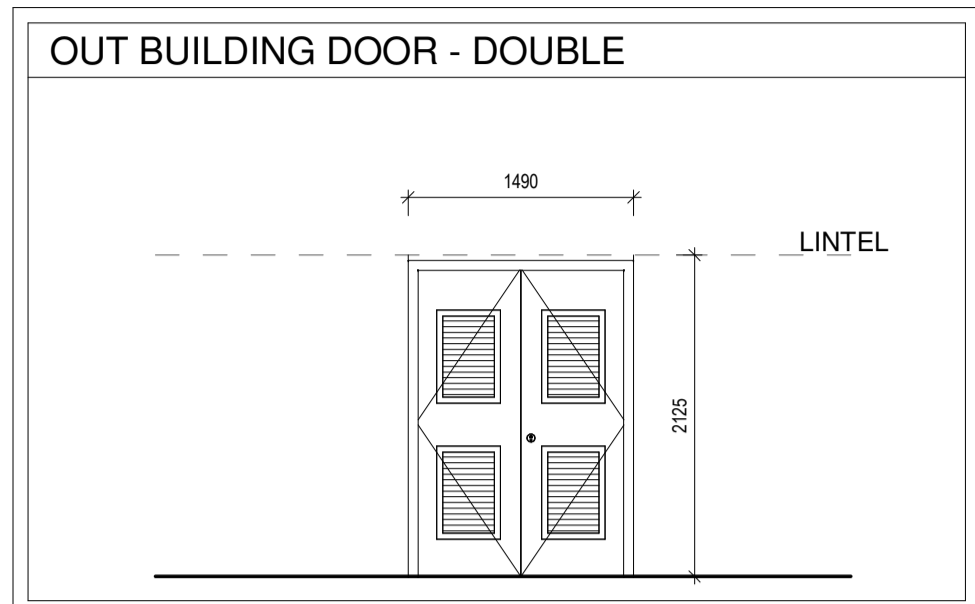
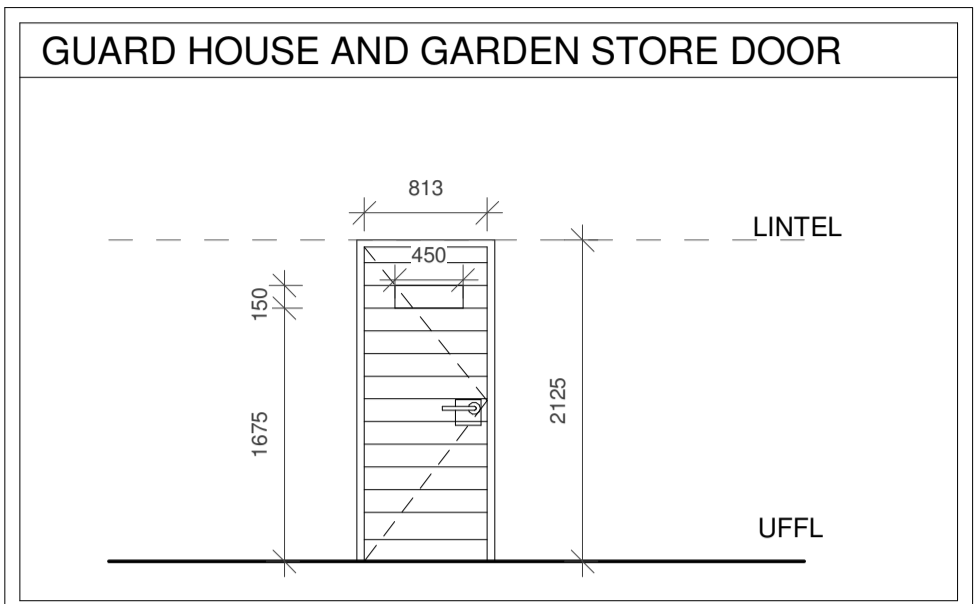


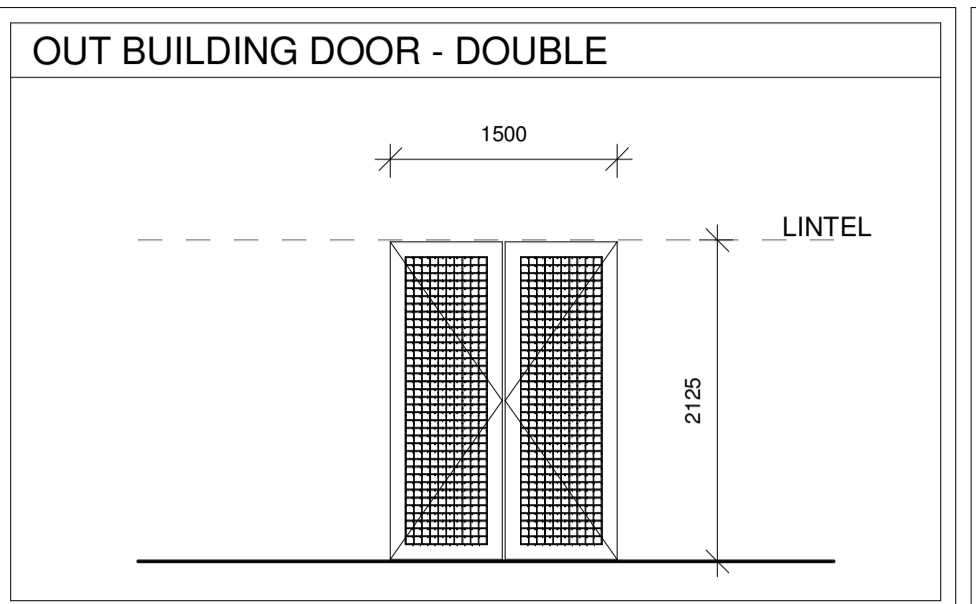
T16	QTY: 1	D110	LEFT HAND	01
			RIGHT HAND	00
FRAME & FINISH	PURPOSE MADE 1.6mm THICK, HOT DIPPED GALVANISED MILD STEEL FRAME, FOR OPENING SIZE 900 x 2125mm HIGH, DOUBLE REBATED, WITH METRED TOP CORNERS, SEAM WELDED, SUPPLIED WITH CORNER STIFFENERS IN THE REVEALS ON THE INSIDE.			
LEAF & FINISH	PURPOSE MADE 1.6mm THICK, HOT DIPPED GALVANISED MILD STEEL, HINGED SINGLE TRANSFORMER DOOR, OPENING SIZE 900 x 2125mm HIGH, FIXED SHUTTER WITHIN LEAF TO BE 507 x 1675mm HIGH, DOUBLE REBATED, WITH METRED TOP CORNERS, SEAM WELDED, SUPPLIED WITH CORNER STIFFENERS IN THE REVEALS ON THE INSIDE.			
GLAZING	NONE.			
MECHANISM	NONE.			
LINTEL	2x PRECAST CONCRETE LINTELS WITH A MINIMUM BEARING OF 150mm.			
THRESHOLD	NONE.			
IRONMONGERY	GALVANISED STEEL PAD BOLT, INSTALLED AS PER MANUFACTURER'S SPECIFICATION			
NOTE	ALL SIZES AND OPENINGS TO BE CHECKED ON SITE PRIOR TO MANUFACTURING. ALL IRONMONGERY AS PER SCHEDULE OR SIMILAR APPROVED BY ARCHITECT ALL HINGES ACCORDING TO MANUFACTURER			



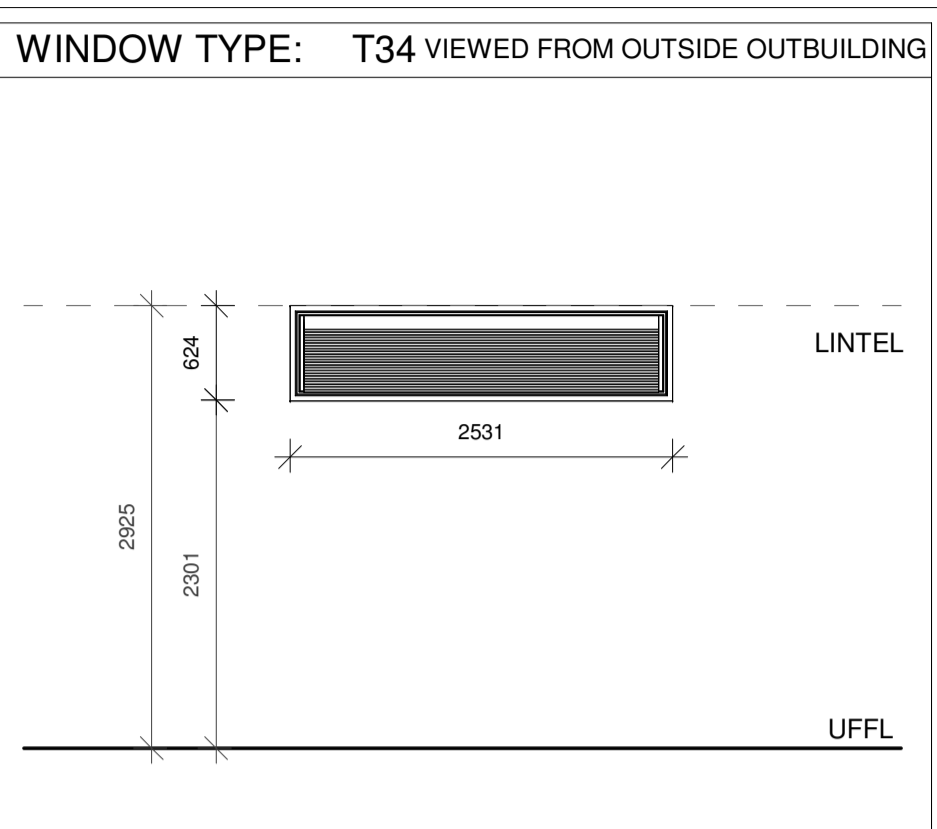
T17	QTY: 1	D68		
FRAME & FINISH	PURPOSE MADE 1.6mm THICK, HOT DIPPED GALVANISED MILD STEEL FRAME, FOR OPENING SIZE 1490 x 2125mm HIGH, DOUBLE REBATED, WITH METRED TOP CORNERS, SEAM WELDED, SUPPLIED WITH CORNER STIFFENERS IN THE REVEALS ON THE INSIDE.			
LEAF & FINISH	PURPOSE MADE 1.6mm THICK, HOT DIPPED GALVANISED MILD STEEL, HINGED DOUBLE TRANSFORMER DOOR, OPENING SIZE 1490 x 2125mm HIGH, FIXED SHUTTER WITHIN LEAF TO BE 507 x 1675mm HIGH, DOUBLE REBATED, WITH METRED TOP CORNERS, SEAM WELDED, SUPPLIED WITH CORNER STIFFENERS IN THE REVEALS ON THE INSIDE.			
GLAZING	NONE.			
MECHANISM	NONE.			
LINTEL	2x PRECAST CONCRETE LINTELS WITH A MINIMUM BEARING OF 150mm.			
THRESHOLD	NONE.			
IRONMONGERY	GALVANISED STEEL PAD BOLT, INSTALLED AS PER MANUFACTURER'S SPECIFICATION WITH INDUSTRIAL SAFETY PADLOCK			
NOTE	ALL SIZES AND OPENINGS TO BE CHECKED ON SITE PRIOR TO MANUFACTURING. ALL IRONMONGERY AS PER SCHEDULE OR SIMILAR APPROVED BY ARCHITECT ALL HINGES ACCORDING TO MANUFACTURER			



T14	QTY: 1	D110	LEFT HAND	00
			RIGHT HAND	01
FRAME & FINISH	STANDARD SINGLE REBATE SCREEDED MS RIGHT HAND DOOR FRAME WITH ONE SHOP COAT RED OXIDE FOR A 230mm WALL. PAINT WITH ONE COAT PRIMER AND FINISH WITH TWO COATS ENAMEL PAINT, COLOUR TO BE CHOSEN BY ARCHITECT			
LEAF & FINISH	NEW 40mm SOLID HORIZONTALLY GROOVED DOOR SUITABLE FOR OUTDOOR USE. PAINT WITH ONE COAT WOOD PRETREATMENT, ONE COAT PRIMER & 2 COATS ENAMEL PAINT. FLUSH MOUNTED DOOR SIGN WITH GREY BACKGROUND, STANDARD MODULAR SIGNAGE SYSTEM FROM EXTRUDED ALUMINIUM AS PER SUPPLIER. TO BE INSTALLED BY APPROVED INSTALLER.			
LINTEL	BRICK-ON-EDGE LINTEL			
THRESHOLD	ALUMINIUM TRANSITION STRIP.			
IRONMONGERY	LEVER HANDLE ON 170x170mm S/S KEYHOLE BACK PLATE COMMERCIAL CYLINDER SASH LOCK 60mm KNOB CYLINDER - MASTER KEYED DOOR STOP 2 X TWO BALL BEARING BUTT HINGE WITH STAINLESS STEEL FINISH.			
NOTE	ALL SIZES AND OPENINGS TO BE CHECKED ON SITE PRIOR TO MANUFACTURING. ALL IRONMONGERY AS PER SCHEDULE OR SIMILAR APPROVED BY ARCHITECT ALL HINGES ACCORDING TO MANUFACTURER			



T15	QTY: 1	D109		
FRAME & FINISH	200mm x 200mm GALVANISED STEEL ANGLES BOLTED TO BRICK WORK TO ACCOMMODATE HINGES AND PAD BOLT AS PER ENG.			
LEAF & FINISH	DOUBLE DOOR FROM 25mm x 4.5mm SMOOTH SURFACE GALVANISED STEEL 50x50 HOLE CENTRES WELDED MESH PANEL WELDED TO HOT DIPPED GALVANISED WITH EPOXY COATED FRAME TO ENG. DOOR TO MATCH FENCING.			
GLAZING	NONE.			
MECHANISM	NONE.			
LINTEL	2x PRECAST CONCRETE LINTELS WITH A MINIMUM BEARING OF 150mm.			
THRESHOLD	NONE.			
IRONMONGERY	GALVANISED STEEL PAD BOLT, INSTALLED AS PER MANUFACTURER'S SPECIFICATION			
NOTE	ALL SIZES AND OPENINGS TO BE CHECKED ON SITE PRIOR TO MANUFACTURING. ALL IRONMONGERY AS PER SCHEDULE OR SIMILAR APPROVED BY ARCHITECT ALL HINGES ACCORDING TO MANUFACTURER			



WINDOW NOS:	W146, 147	QUANTITY:	2
WINDOW FRAME & FINISH:	PURPOSE MADE ALUMINIUM LOUVREWINDOW - POWDERCOATED COLOUR: ANTHRACITE MATT GREY		
GLAZING	NONE		
MECHANISM & IRONMONGERY	AS PER MANUFACTURER.		
LINTEL	STEEL LINTEL ACCORDING TO ENGINEERS SPEC. INTERNAL AND EXTERNAL - PLASTER & PAINT		
SILL	FACE BRICK SILL		
NOTE	ALL SIZES AND OPENINGS TO BE CHECKED ON SITE PRIOR TO MANUFACTURING AND ANY DISCREPANCIES BROUGHT TO THE ATTENTION OF THE ARCHITECT IMMEDIATELY. ALL GLASS TO COMPLY WITH SABS 1293. ALL ALUMINIUM FRAMES TO COMPLY WITH AAAMSA SPECIFICATIONS. A SAMPLE OF THE WINDOW TO BE APPROVED BY ARCHITECT PRIOR TO MANUFACTURE.		



LEGEND:

NOTE:
STEEL DOOR FRAME COLOUR:
 ONE SHOP COAT RED OXIDE FOR A 230mm WALL. PAINT WITH ONE COAT PRIMER AND FINISH WITH TWO COATS ENAMEL PAINT (COLOUR: ANTHRACITE GREY)
TIMBER DOOR LEAVE COLOUR:
 ONE COAT PRIMER & 2 COATS WATER BASED ENAMEL (COLOUR: MINES GREY)
 SAMPLES TO BE PROVIDED

TENDER

Rev	Date	Description of changes	By
A	2023-06-30	ISSUED FOR TENDER	SBM

REVISIONS

Client

The Bus Factory
No.3 President Street
Newtown
Johannesburg
TEL: +27 11 688 7851
FAX: +27 11 688 7899

Consultant

P O BOX 35703
MENLOPARK
0102
TEL: (012) 368 1850
FAX: (012) 348 4738

APPROVED THE MASTER HELD AT DELTA BUILT ENVIRONMENT CONSULTANTS BEARS THE ORIGINAL SIGNATURE OF APPROVAL SACAP : 30447969

DocuSigned by:

 SHAKIRA BENADIE-MARAÏS 2023-06-30
 SIGNATURE: NAME: DATE:

Project

JDA NALEDI CLINIC

Project Description

NEW CLINIC IN NALEDI EXT. 2

Drawing Title

DOOR & LOUVRE SCHEDULE

Drawing Units MILLIMETERS

Date	Scale	Designed By
2023-06-30	1 : 50	MP
Checked By	Drawn By	Approved By
MP	TJJVR	MP
Drawing No	P17064-TN-01-ARC-6000	
	Rev.	