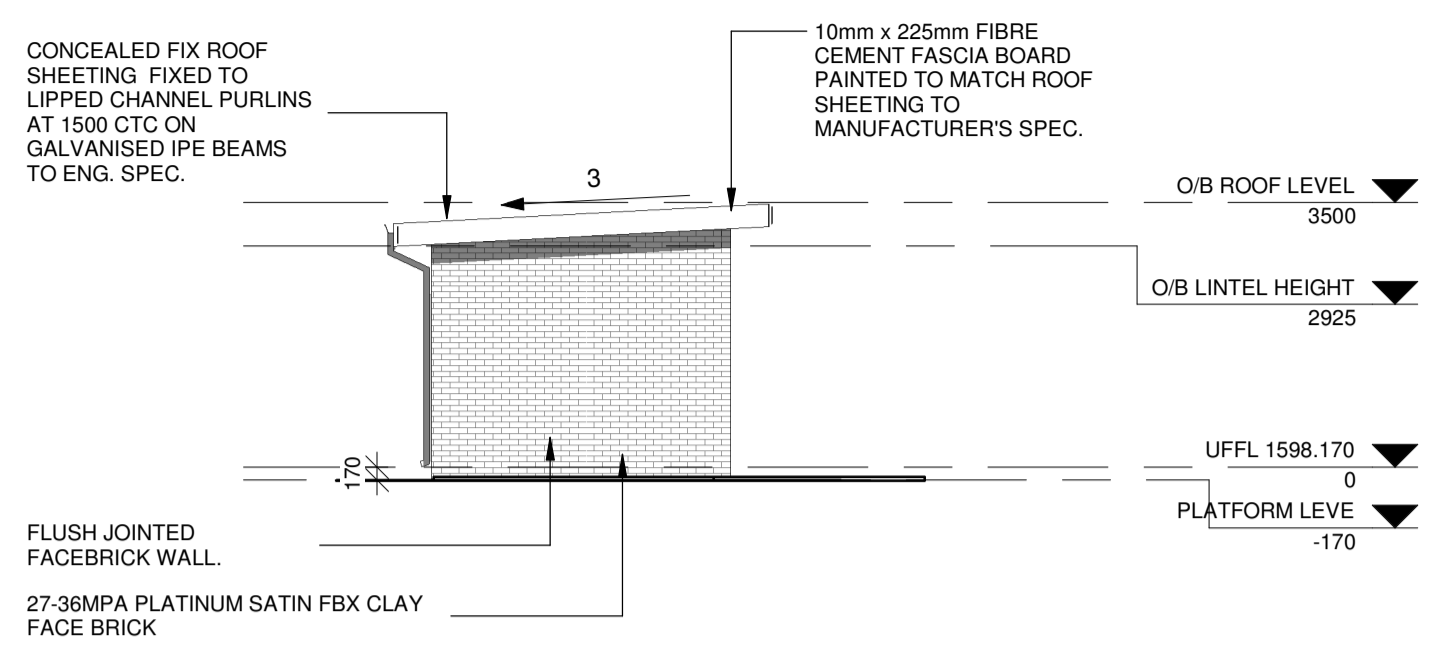


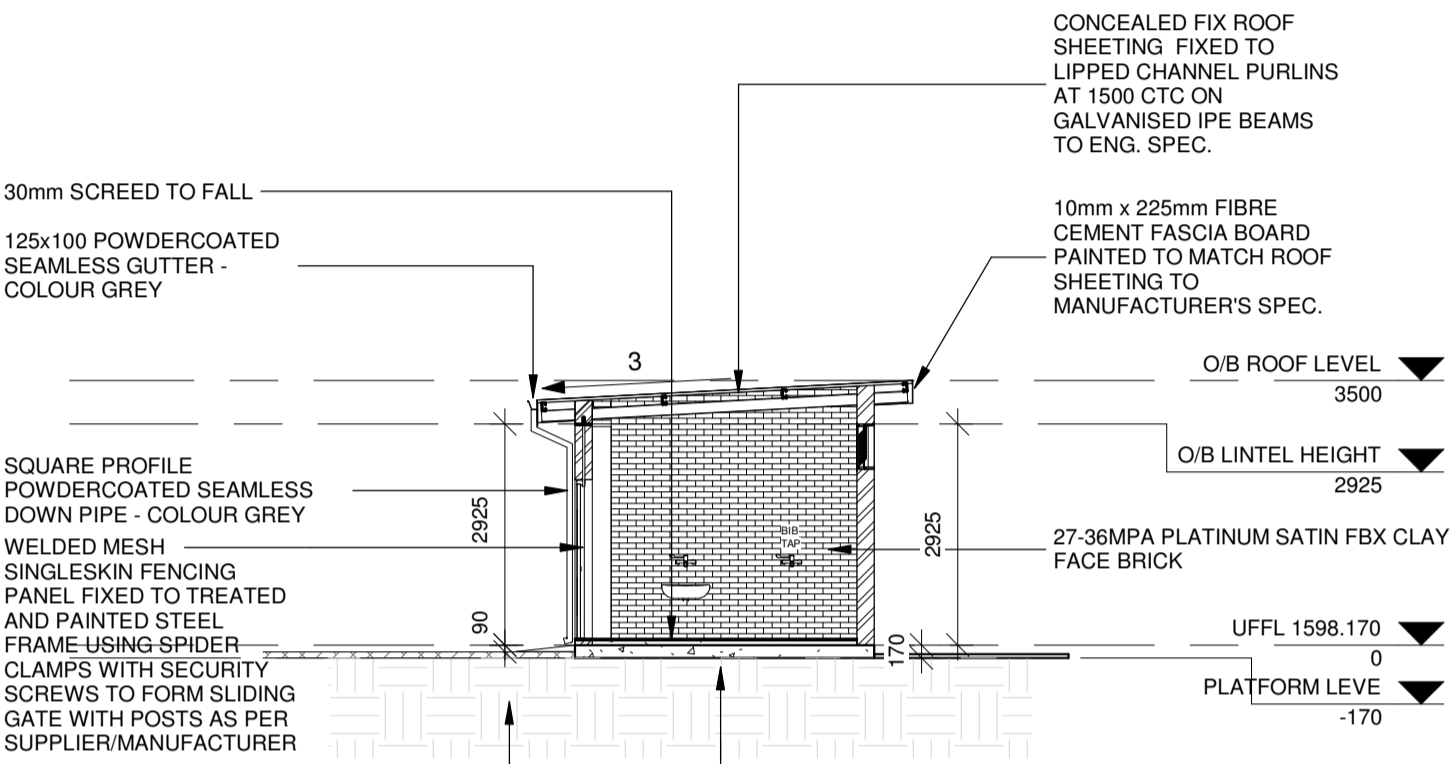
**NORTH OUT BUILDING ELEVATION**

1 : 100



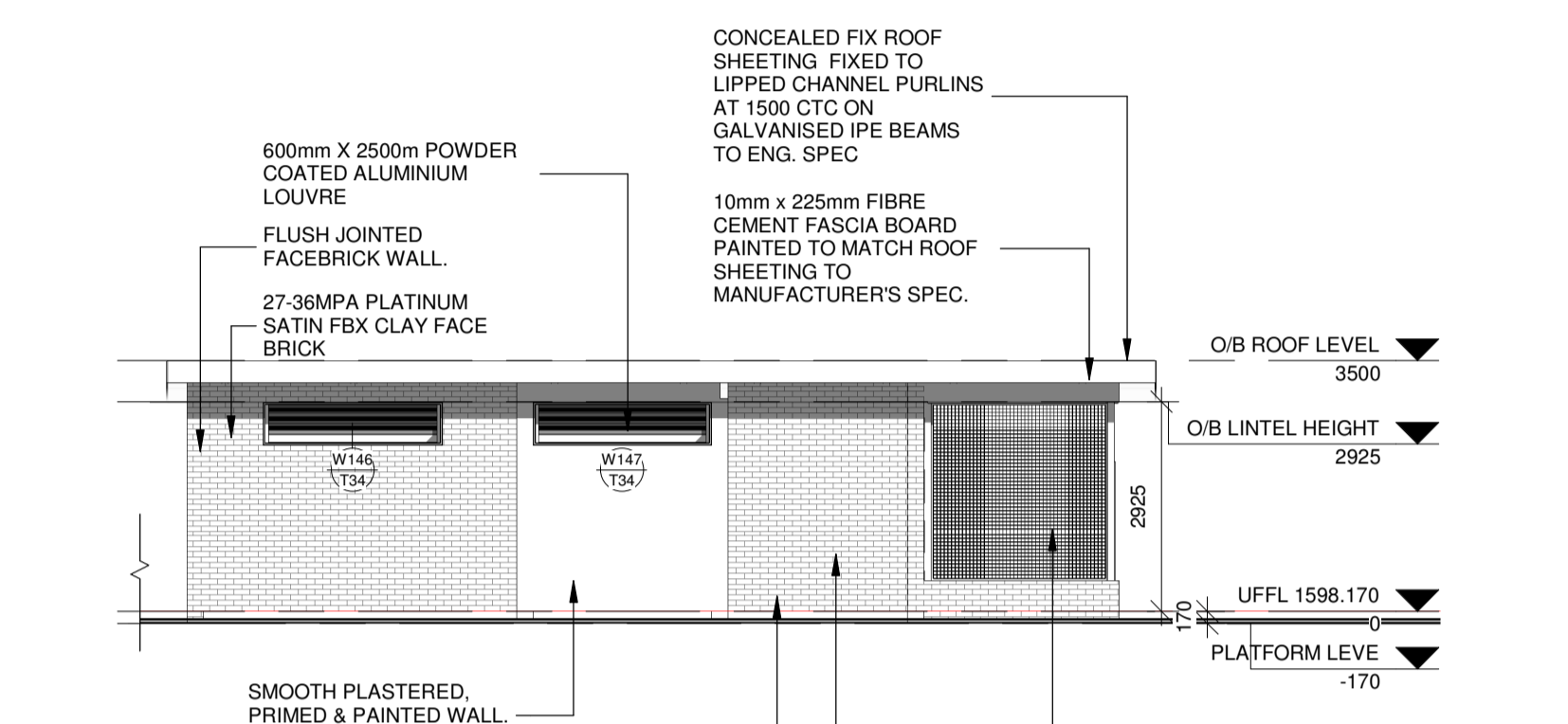
**SOUTH OUT BUILDING ELEVATION**

1 : 100



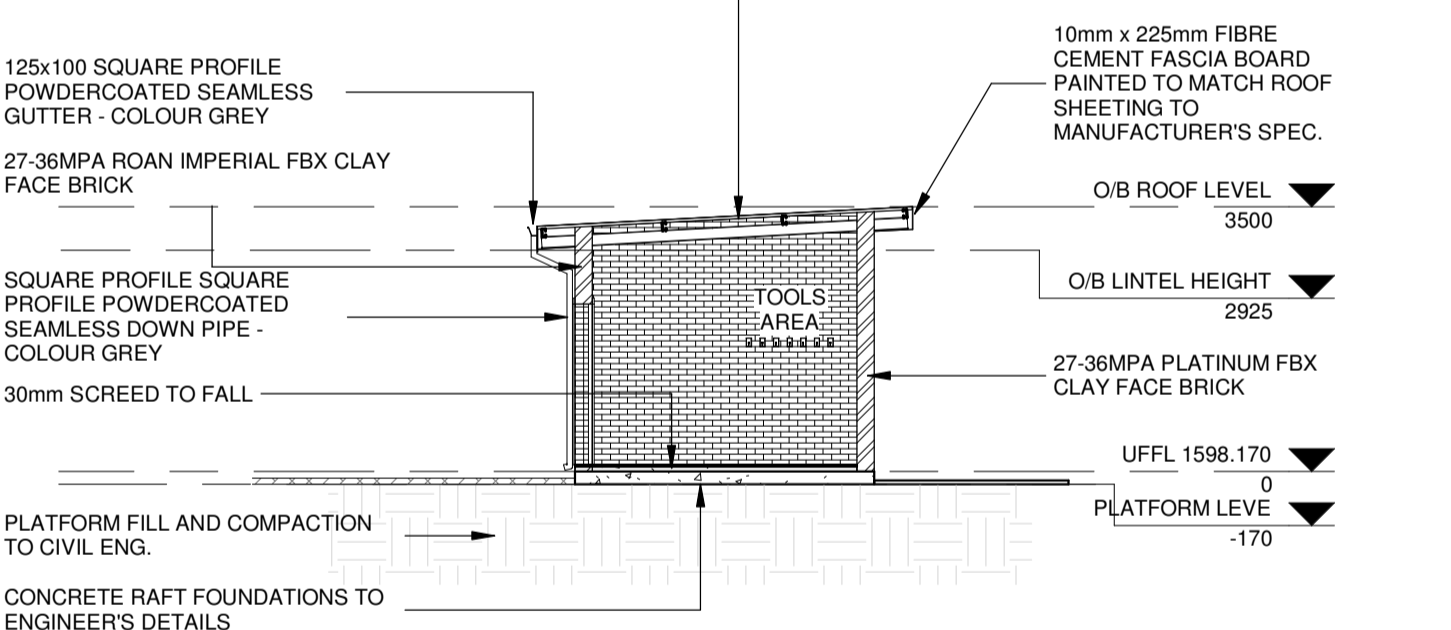
**SECTION K-K**

1 : 100



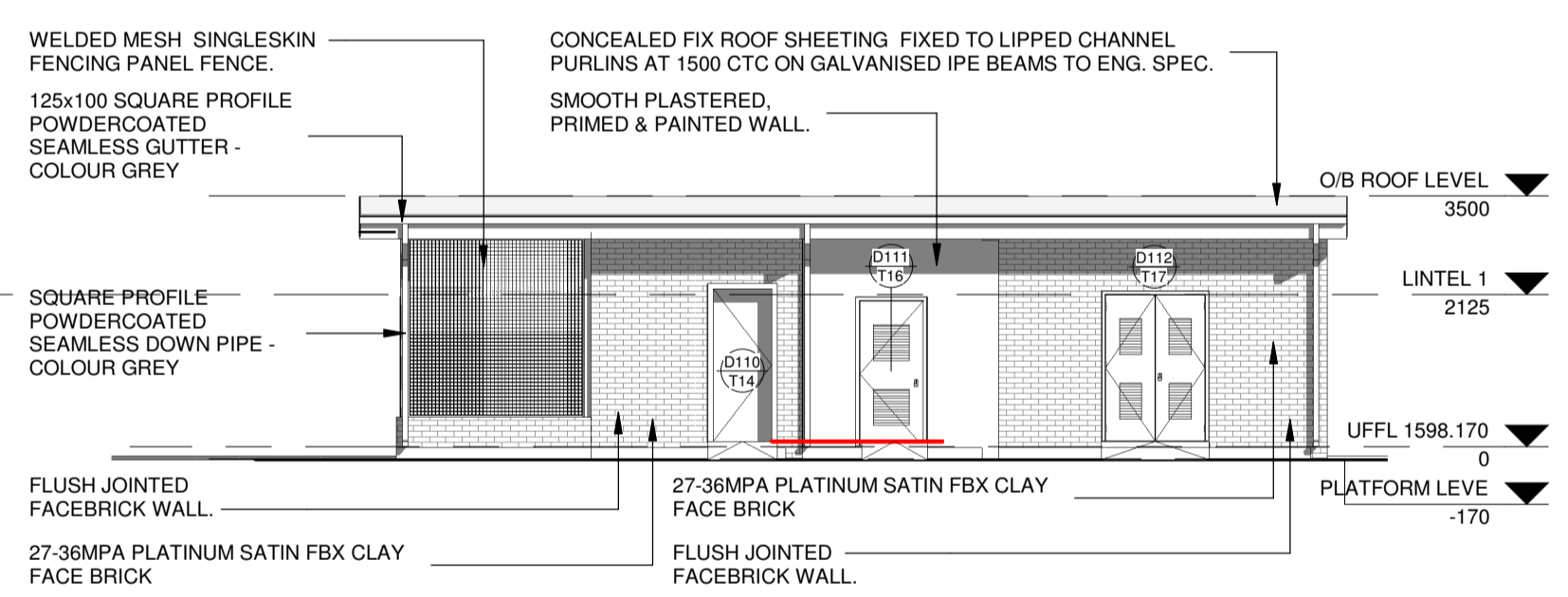
**SECTION J-J**

1 : 100



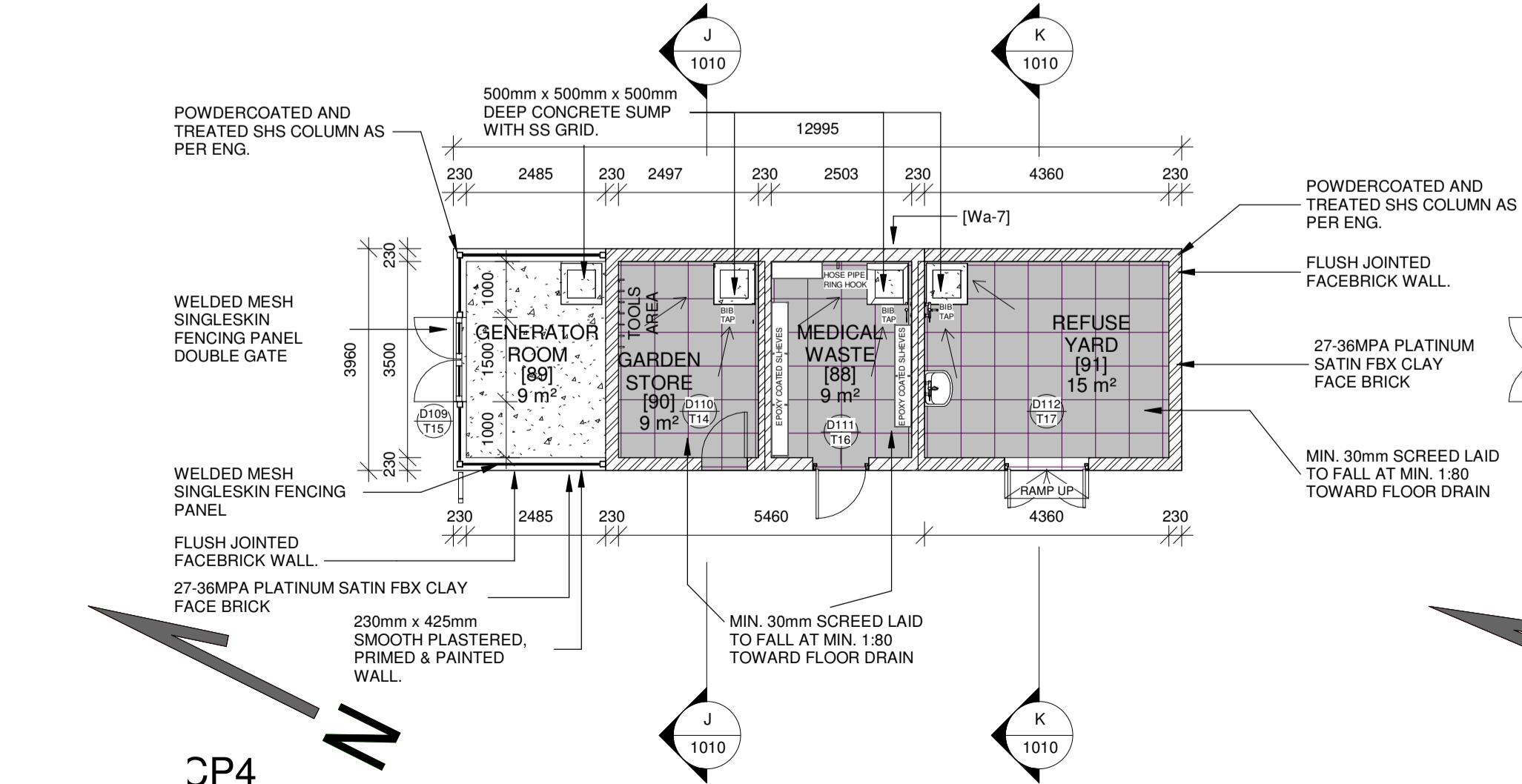
**SECTION K-K**

1 : 100



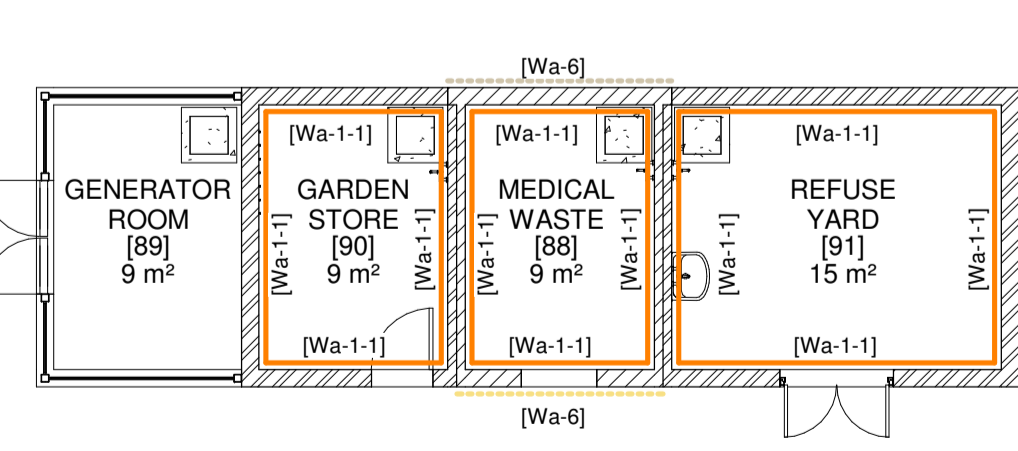
**SECTION J-J**

1 : 100



**CP4 OUT BUILDING PLAN**

1 : 100



**WALL FINISHES PLAN OUTBUILDING**

1 : 100

**LEGEND**

- 600 X 600 (MINIMUM SLIP RESISTANCE OF R=9) FULL BODIED PORCELAIN LIGHT GREY TILES

**FINISHING SCHEDULE - WALLS**

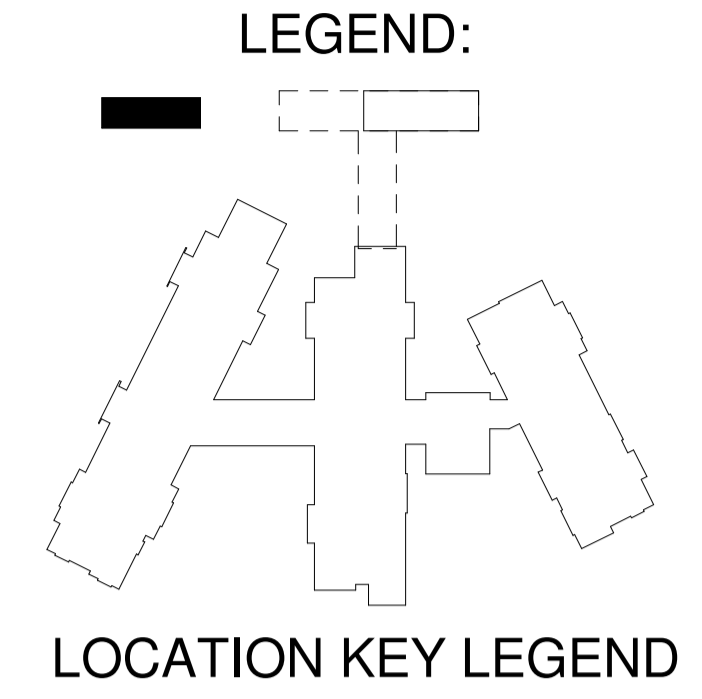
- [Wa-1-1] 600mm x 300mm FULL GLAZED CERAMIC TILES:  
LIGHT GREY FULL BODIED PORCELAIN TILES, SIZE 600mm x 300mm, FIXED TO INTERNAL WALL PLASTER WITH TILE ADHESIVE WITH JOINTS CONTINUOUS IN BOTH DIRECTIONS AND GROUTED WITH FINE INDUSTRIAL GREY ANTI-BACTERIAL EPOXY TILE GROUT. EXCESS GROUT ON THE SURFACE TO BE CLEANED WITH WATER AS WORK PROCEEDS.
- [Wa-7] PLASCON WINTER SAVANNAH MATT WALL PAINT (27) (EXTERNAL PAINT)  
SURFACE TO BE DRY, SOUND AND CLEAN AND CURED FOR A MINIMUM OF 14 DAYS. WITH A MOISTURE CONTENT MEASURED WITH A DOSER HYGROMETER (OR EQUIVALENT), OF 80 2 SCALE - 8% OR LESS. PRIME WITH ONE COAT PROFESSIONAL PLASTER PRIMER WITH AN OVERCOATING TIME OF 16 HOURS AND FINISH WITH TWO COATS WATER BASED ENAMEL WITH 2 HOURS DRYING TIME BETWEEN COATS.

**SANITARY SCHEDULE**

ANY DISCREPANCIES, IRREGULARITIES TO BE CHECKED AND VERIFIED WITH ARCHITECT BEFORE PLACING ORDER OR WORK IS CARRIED OUT.  
ALL MATERIAL TO BE LOCALLY SOURCED AND OR APPROVED BY ARCHITECTS.  
ALL ITEMS ARE PROVISIONAL UNTIL OTHERWISE SPECIFIED IN WRITING BY THE ARCHITECT OR CLIENT.  
ALL ITEMS TO BE SUPPLIED AND INSTALLED.  
ALL ITEMS TO BE APPROVED OR SIMILAR APPROVED BY ARCHITECT.

	<b>BIB TAP:</b> COBRA WATERTECH STAR CHROME HOSE BIB TAP (CODE: 107EC-15), MANUFACTURED IN ACCORDANCE WITH SANS 226 TYPE 1, INSTALLED IN ACCORDANCE WITH THE MANUFACTURERS RECOMMENDATIONS.	1
	<b>WALL HUNG MEDICAL BASIN:</b> 500(d)x630(w) VITREOUS CHINA, WALL HUNG BASIN WITH ONE TAP HOLE - OR SIMILAR APPROVED BY ARCHITECT - TO BE WALL MOUNTED USING TWO 10mm BOLTS - STRICTLY ACCORDING TO MANUFACTURER.	1
	<b>ELBOW MIXER:</b> 15mm CHROME PLATED SINGLE ELBOW ACTION BASIN MIXER WITH AERATED STRAIGHT SPOUT - TO BE MOUNTED TO BASIN/COUNTER STRICTLY ACCORDING TO MANUFACTURER'S SPECIFICATION.	1
	<b>BOTTLE TRAP:</b> DIP TUBE TRAP FOR WASHBASIN, HORIZONTAL OUTLET: D40MM G1 1/4" BRIGHT CHROME-PLATED - PLASTIC	1
	<b>SOAP DISPENSER:</b> ELBOW ACTION CRADLE SOAP DISPENSER, PLUGGED AND SCREWED TO THE WALL WITH STAINLESS STEEL SCREWS	1

<b>GARDEN STORE</b>	<b>MEDICAL WASTE AREA</b>	<b>REFUSE AREA</b>
1	1	1



**LOCATION KEY LEGEND**

**TENDER**

Rev	Date	Description of changes	By
A	2023-06-30	ISSUED FOR TENDER	SBM

**REVISIONS**

Client

The Bus Factory  
No.3 President Street  
Newtown  
Johannesburg

TEL: +27 11 688 7851  
FAX: +27 11 688 7899

Consultant

P O BOX 35703  
MENLOPARK  
0102

TEL: (012) 368 1850  
FAX: (012) 348 4738

APPROVED

THE MASTER HELD AT DELTA BUILT ENVIRONMENT CONSULTANTS BEARS THE ORIGINAL SIGNATURE OF APPROVAL

SACAP : 30447969

DocuSigned by:

SHAKIRA BENADIE-MARAIS 2023-06-30

SIGNATURE: NAME: DATE:

Project

**JDA NALEDI CLINIC**

Project Description

**NEW CLINIC IN NALEDI EXT. 2**

Drawing Title

**OUT-BUILDING PLAN, SECTIONS, ELEVATIONS & SCHEDULES**

Drawing Units	MILLIMETERS		
Date	2023-06-30	Scale	As indicated
Designed By	MARCEL KIMOTO		
Checked By	S. MARAIS	Drawn By	TJJVR
Approved By	MARCEL KIMOTO		
Drawing No	P17064-TN-01-ARC- 1010		Rev