

**REQUEST FOR QUOTATION (RFQ)**

Request for Quotation	Response Date	Estimated Assessment & Award	Estimated Delivery Period
06 May 2021	13 May 2021 by 12h00	2 weeks from response date	12 months
<b>RFQ Number</b>	<b>JDA INNER CITY RANKS/CN010N FOR JACK MINCER TAXI RANK</b>		
<b>Service Provider Discipline</b>	<b>GEOTECHNICAL SERVICES</b>		
<b>Project Name</b>	<b>INNER CITY RANKS GEOTECHNICAL SERVICES</b>		
<b>Terms and Conditions</b>	<ul style="list-style-type: none"> <li>Professionals are to provide geotechnical services for the implementation of the Inner City Ranks Project for Jack Mincer Taxi Rank</li> <li>This RFQ to be advertised on the website</li> <li><b>Reponses are due on or prior 13May 2021 at 12:00 and must be hand delivered in the JDA tender box</b></li> <li><b>Procurement related questions must be directed to the <a href="mailto:ydinga@jda.org.za">ydinga@jda.org.za</a> and technical queries to <a href="mailto:cmouton@jda.org.za">cmouton@jda.org.za</a></b></li> <li><b>Service providers will be automatically disqualified for:</b> <ul style="list-style-type: none"> <li>failure to submit the "OFFER PAGE" which must be signed and completed in full.</li> <li>Failure to provide the certification of the lead engineer's professional registration with the Engineering Council of South Africa (ECSA)</li> </ul> </li> <li><b>Service providers will be automatically disqualified for failure to price as required as stipulated in item No. 5 and 6 herein.</b></li> <li><b>Service providers will be scored zero (0) for failure to submit an updated and valid BBBEE certificate.</b></li> <li>JDA will only award business to suppliers who are registered on National Treasury's CSD (Central Supplier Database) and suppliers will no longer be required to provide an Original Tax Clearance Certificate or any other registration documents. Please supply evidence that you are registered on CSD.</li> <li>Please note the original intention of this RFQ is to assist the JDA to achieve its area based agency mandate, by enabling the procurement of the services of technical professionals and specialist consultants to assist in all pre-development work including planning, designing, conducting studies, feasibility or condition assessments and any statutory and legal applications.</li> <li>This panel allows the JDA to draw in the necessary professional services to fast-track catalytic interventions across the priority development areas of the City.</li> <li><b>Annexure A and B must be signed and completed in full.</b></li> <li><b>A copy of the latest municipal rates and taxes must be attached in the submission.</b></li> </ul>		
<b>Requested By</b>	<b>Celestine Mouton</b> <b>Development Manager</b> Telephone: +27 11 688 7800 Cellphone: +27 73 145 9349 <a href="mailto:cmouton@jda.org.za">cmouton@jda.org.za</a>		

RFQ: - Geotechnical Services - City Ranks Project

## 1. PROJECT INFORMATION

### 1.1 Background

The Inner-City regeneration programme has been underpinned by the Inner-City Regeneration Charter since 2007. In July 2013 the City of Johannesburg launched the Inner-City Transformation Roadmap, which is the framework that will guide further development of the inner city in the medium term. It is a framework that recognises the central role of the inner city as an entry point and a place of opportunity for many, including the poor. The inner city continues to be a meeting point for diverse cultures, as scores of individuals aspire to create a livelihood and find a foothold in the heart of Johannesburg.

The City's stated intention is to deliver, extend and maintain services that are sustainable in the long term; to provide the social support and facilities that promote inclusivity and diversity; and to encourage productivity and the economic endeavours of large and small business. This can only be achieved with good governance and strategic planning and budgeting. It can only be sustained with dedicated effort to maintain and repair the infrastructure that is the backbone of the built environment. And it is best achieved within neighbourhoods – a planning and implementation system that is focused on delivery and maintenance at the local scale. This area-based focus is essential if we are to tackle issues in the inner city in a holistic way.



Inner City 2012



Inner city 2040

The roadmap is the framework through which the City and multiple stakeholders can collectively pursue the vision of the inner city as A place of opportunity: a well-governed, transformed, safe, clean and sustainable inner city of Johannesburg, which offers high quality, sustainable services; supports vibrant economic activity; and provides a

welcoming place for all residents, migrants, commuters, workers, traders, investors and tourists.

## **1.2 Project Purpose**

The upgrading of the Inner-City Ranks is intended to fulfil the broader regeneration objectives including to address the relevant Johannesburg Growth and Development Strategy outcomes, which aims to promote the following:

- Economic growth;
- Environmental quality;
- Accessibility and connectivity;
- Liveability (create a vibrant public realm with high quality public space);
- Social cohesion and inclusivity; and
- Public transport orientated development and intermodal integration.

## **1.3 Project Location and Description**

The refurbishment of this rank will be for the Inner City Local and Long Distance Taxi taxis. There are numerous ranks identified as a start for implementation. For purposes of this RFQ, Jack Mincer Taxi Rank (Noord Street Taxi Rank Cnr Plein and King George Street) is the study area.

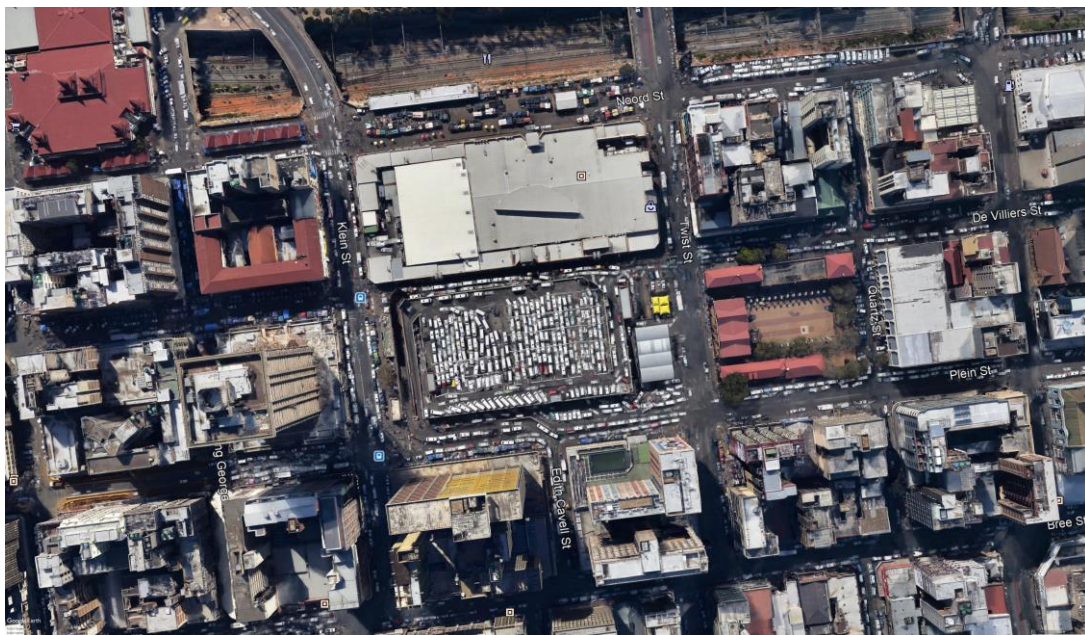


Figure 1: Jack Mincer Taxi Rank

## **2. APPOINTMENT**

The JDA is requesting proposals from experienced companies and joint ventures to render **geotechnical services** over project over 12 months.

## Scope of Work: Geotechnical Services: Jack Mincer Taxi Rank

- a) Evaluation of material from test pits to include:
- Soil Profiles and trial pit logs and interpretation.
  - Test pits to be done on a grid that covers the entire investigated interest site area.
  - Test pits must be to a minimum depth of 2.5 metres or to the maximum reach of the TLB arm or to refusal.
  - A minimum of five (5) boreholes to be drilled to a minimum depth of 15m with SPTs taken at 1,5m depths at this site.
  - Test results and interpretation
  - Foundation Indicators
  - Sieve analysis per identified layer
  - Ground slope stability, collapse potential, swell tests
  - Excavatability of ground
  - Potential expansiveness
  - Geohydrology conditions
  - Fill Suitability, Expansiveness, and Erodibility
  - The type of foundation system must be recommended in the report
  - Bearing capacity at the foundation strata with the permissible settlement
- b) Ground Water
- Present level and expected rise/fall of water table.
  - Chemical considerations
  - Comment on zones affected by springs and/or poor drainage.
- c) Rock
- Percentage of Rock or Outcrops
  - Type of Rock
- d) Recommendations:

The geotechnical final report (**both Phase 1 and Phase 2 reports**) must include recommendations for the Structural Engineer on materials on site, suitability thereof for use as construction materials and if necessary, indicate:

- The need for any further detailed investigations.
- The need for specialist site inspections during construction work.

### 3. TARGET AUDIENCE FOR OUTPUT

Primary	Secondary
<ul style="list-style-type: none"> <li>• Johannesburg Development Agency</li> <li>• Emergency Management Services</li> </ul>	<ul style="list-style-type: none"> <li>• Ward councillor</li> <li>• Community members</li> <li>• City of Johannesburg</li> </ul>

#### 4. TIMEFRAMES

The JDA is requesting quotations to render Geotechnical services required for Inner City Ranks project over 12 months

No	Description	Timeframe
1	Request for Quotation (RFQ) sent to tenderers	30 April 2021
2	Closing of RFQ	10 May 2021
3	Evaluation and adjudication of submissions	21 May 2021
4	Appointment of Land Surveyor	28 May 2021
5	“Taking Up” And Familiarization	June 2021
6	Surveying of Site	July 2021
7	Testing of materials	July/August 2021
8	Report and Recommendations	September 2021
9	Inspections	Until end of contract

#### 5. PRICING RESPONSE / QUOTATION

It is important to note the following:

- a) **The table to follow must be completed and submitted together with the Offer Page. A price must be submitted for each item listed in the table.**
- b) **A breakdown of how the fees calculated must be included in the proposal**
- c) **No hourly rates will be accepted.**
- d) **Failing to price as required will result in the tender being disqualified.**
- e) For every tangible deliverable, two hard copies and one electronic copy must be issued, the cost of which must be included in the offer price.

4.1.1.4. Standard disbursements such as typing, drawings, reproduction, copying, and binding of documents, telephonic/electronic and facsimile communications, and courier should be accrued by a service provider. Additional disbursements must have the prior written agreement of the JDA, unless specifically contained in an agreed IPW / RFP

4.1.1.5. No disbursement costs (such as local travel and accommodation) should be accrued by a service provider without prior written agreement of the JDA, unless specifically contained in by an agreed IPW / RFP

## 6. GEOTECHNICAL SERVICES: PRICING

Geotechnical Services for Jack Mincer Taxi Rank as outlined above					
	Description	Unit of Measure	Unit Price	Quantities	Total
1	Evaluation of material from test pits	Sum		1	
2	Ground Water	Sum		1	
3	Rock	Sum		1	
4	Recommendation Report including recommendations for further studies	Sum		1	
	Total Sum of Fees for Geotechnical services				R -
	Disbursements (as a % of sub-total)			____%	
	<b>Total Fee to be carried to the Offer Page (Excluding VAT)</b>				R

Service Providers must ensure that the final TOTAL FEE is correctly carried to the “offer” page. The value recorded on the offer page will be regarded as the quoted amount.

## 7. PRESENTATION OF QUOTATIONS

Submissions are to ONLY consist of the documentation as requested below.

Section Number	Information
1	Tender OFFER Page, completed in FULL and SIGNED. <b>FAILING TO SUBMIT A PRICE ON THE OFFER PAGE AND TO SIGN THE OFFER PAGE WILL RESULT IN DISQUALIFICATION.</b>
2	Service Providers are to complete the pricing table under item #7 herein. <b>FAILURE TO COMPLETE THE TABLE, PRICE ALL ITEMS AND SUBMIT WILL RESULT IN DISQUALIFICATION.</b>  The cost of the required services must be defined in rand terms. All disbursements, etc. are to be <b>covered</b> by / included in the quotation.  Applicants must ensure that the <b>TOTAL FEE IS CORRECTLY CALCULATED AND TRANSFERRED TO THE OFFER PAGE.</b>
3	Brief response to the Scope of Work (maximum 2 pages) which includes an organogram of persons to be employed on the project, their qualifications and relevant experience.

Section Number	Information																																										
3	Copy of CSD: No award will be made to a service provider who is not registered with National Treasury Central Supplier Database. No award will be made to a service provider whose tax matters are not in order with the South African Revenue Services.																																										
4	<p>The points allocated to a tenderer will be in accordance with the <b>Preferential Procurement Regulations, 2017</b> published in Government Gazette No. 40553 dated 20 January 2017. An original and valid BBEE status levels verification certificate or a certified copy thereof, substantiating the bidding entities BBEE rating. Only certificates issued by verification agencies accredited by the South African Accreditation System (SANAS), or by registered auditors approved by the Independent Regulatory Board of Auditors</p> <table border="1"> <thead> <tr> <th rowspan="2">B-BBEE Status Level Of Contributor</th> <th rowspan="2">B-BBEE Recognition</th> <th colspan="2">Number of Points</th> </tr> <tr> <th>Tenders up to R30,000 R50 million</th> <th>Tenders above R50+ million</th> </tr> </thead> <tbody> <tr> <td>1</td> <td>135%</td> <td>20</td> <td>10</td> </tr> <tr> <td>2</td> <td>125%</td> <td>18</td> <td>9</td> </tr> <tr> <td>3</td> <td>110%</td> <td>14</td> <td>6</td> </tr> <tr> <td>4</td> <td>100%</td> <td>12</td> <td>5</td> </tr> <tr> <td>5</td> <td>80%</td> <td>8</td> <td>4</td> </tr> <tr> <td>6</td> <td>60%</td> <td>6</td> <td>3</td> </tr> <tr> <td>7</td> <td>50%</td> <td>4</td> <td>2</td> </tr> <tr> <td>8</td> <td>10%</td> <td>2</td> <td>1</td> </tr> <tr> <td>Non - Compliant contributor</td> <td>0%</td> <td>0</td> <td>0</td> </tr> </tbody> </table> <p>(IRBA) will be accepted.  An EME must submit a sworn affidavit confirming the following: <ul style="list-style-type: none"> <li>• Annual Turnover Revenue of R6 million or less; and</li> <li>• Level of Black ownership</li> </ul> Any misrepresentation in terms of bullet point above constitutes a criminal offence as set out in the B-BBEE Act as amended</p>	B-BBEE Status Level Of Contributor	B-BBEE Recognition	Number of Points		Tenders up to R30,000 R50 million	Tenders above R50+ million	1	135%	20	10	2	125%	18	9	3	110%	14	6	4	100%	12	5	5	80%	8	4	6	60%	6	3	7	50%	4	2	8	10%	2	1	Non - Compliant contributor	0%	0	0
B-BBEE Status Level Of Contributor	B-BBEE Recognition			Number of Points																																							
		Tenders up to R30,000 R50 million	Tenders above R50+ million																																								
1	135%	20	10																																								
2	125%	18	9																																								
3	110%	14	6																																								
4	100%	12	5																																								
5	80%	8	4																																								
6	60%	6	3																																								
7	50%	4	2																																								
8	10%	2	1																																								
Non - Compliant contributor	0%	0	0																																								

## **8. RISK TOLERANCE FRAMEWORK**

The JDA has adopted a Risk Tolerance Framework (RTF) which directs the JDA to consider its risk exposure to contractors/Service Providers in terms of the number of contracts awarded to a single Contractor/service provider or the total value of contracts awarded to a single Contractor/service provider in a particular year.

In terms of the Risk Tolerance Framework, the JDA determine the risk exposure as excessive in instances where the value of the contracts for individual **Professional Service providers e.g. Project manager, Engineers, Quantity Surveyor and Consultants**) is either:

1. The greater of **R8 million** or four contracts/ projects in the current financial year or
2. The greater of **R12 million** or six contracts/projects over two financial years (current year and previous financial year).

And

For **multi-disciplinary professional teams** in instances where the value of the contracts awarded is (e.g. more than one discipline being provided by the same bidder) is either:

1. The greater of **R12 million** or six contracts/ projects in the current financial year or
2. The greater of **R20 million** or nine contracts/projects over two financial years (current year and previous financial year)

A risk analysis shall be undertaken on the bidder with the highest number of points obtained, to determine whether the tenderer does not exceed the JDA's risk framework criteria as stated above, in other words whether it falls within the ambit of the Risk Tolerance Framework as acceptable. JDA reserves the right to award a contract to a bidder who has exceeded the threshold as stated above.



## THE OFFER

THE FOLLOWING PARTICULARS MUST BE FURNISHED (FAILURE TO DO SO WILL RESULT IN YOUR BID BEING DISQUALIFIED)				
<b>BID / RFQ NUMBER</b>		<b>JDA Inner City Ranks</b>		
<b>BID / RQP DESCRIPTION</b>		<b>Geotechnical Services for Jack Mincer Taxi Rank CN010b</b>		
<b>NAME OF BIDDER</b>				
<b>POSTAL ADDRESS</b>				
<b>STREET ADDRESS</b>				
<b>TELEPHONE NUMBER</b>	<b>CODE</b>		<b>NUMBER</b>	
<b>CELLPHONE NUMBER</b>	<b>CODE</b>		<b>NUMBER</b>	
<b>FACSIMILE NUMBER</b>	<b>CODE</b>		<b>NUMBER</b>	
<b>VAT REGISTRATION NUMBER</b>				
<b>CSD SUPPLIER NUMBER<sup>1</sup></b>				
<b>COMPANY REGISTRATION NUMBER</b>				
<b>TAX VERIFICATION PIN</b>				
<b>TOTAL BID PRICE (Excluding Vat)</b>		<b>R</b>		
<b>TOTAL BID PRICE IN WORDS (Excluding Vat)</b>				
<b>SIGNATURE OF BIDDER</b>				
<b>CAPACITY UNDER WHICH THIS BID IS SIGNED</b>				
<b>DATE</b>				

Effective 1 July 2016, the JDA will only award business to suppliers who are registered on National Treasury's CSD and suppliers will no longer be required to provide an Original Tax Clearance Certificate or any other registration documents.

**ANNEXURE A: DECLARATION ON STATE OF MUNICIPAL ACCOUNTS**

- A Any bid will be rejected if:
  - Any municipal rates and taxes or municipal service charges owed by the bidder or any of the directors to the municipality or a municipal entity, or to any other municipality or municipal entity, are in arrears for more than three months, and no arrangement of payment is in place.

B Bid Information

- i. Name of bidder.....
- ii. Company Registration Number.....
- iii. Municipality where business is situated .....
- iv. Municipal account number for rates: .....
- v. Municipal account number for water and electricity:.....
- vi. Names of all directors, their ID numbers and municipal account number.
  - 1. ....
  - 2. ....
  - 3. ....
  - 4. ....
  - 5. ....
  - 6. ....

C Documents to be attached.

- i. **A copy of municipal account mentioned in B (iv) & (v) (Not older than 3 months)**
- ii. **A copy of municipal accounts of all directors mentioned in B(vi) (Not older than 3 months)**
- iii. **Proof of directors**

I/We declare that the abovementioned information is true and correct and that the following documents are attached to this form:

.....  
.....  
.....

\_\_\_\_\_  
SIGNATURE:

\_\_\_\_\_  
DATE:

**FORM B: DECLARATION OF INTEREST**

- 1. No bid will be accepted from persons in the service of the state\*.
  
- 2. Any person, having a kinship with persons in the service of the state, including a blood relationship, may make an offer or offers in terms of this invitation to bid. In view of possible allegations of favouritism, should the resulting bid, or part thereof, be awarded to persons connected with or related to persons in service of the state, it is required that the bidder or their authorised representative declare their position in relation to the evaluating/adjudicating authority.
  
- 3. In order to give effect to the above, the following questionnaire must be completed and submitted with the bid.

3.1 Full Name: .....

3.2 Identity Number: .....

3.3 Position occupied in the company (director, trustees, shareholder\*\*) .....

3.4 Company Registration Number: .....

3.5 Tax Reference Number: .....

3.6 VAT Registration Number: .....

3.7 The names of all directors / trustees / shareholders / members, their individual identity numbers and state employee numbers must be indicated in paragraph 4 below.

3.8 Are you presently in the service of the state\*  
**YES / NO**

If yes, furnish particulars

.....  
.....

3.9 Have you been in the service of the state for the past twelve months?  
**YES / NO**

If yes, furnish particulars

.....  
.....

3.10 Do you, have any relationship (family, friend, other) with persons in the service of the state and who may be involved with the evaluation and or adjudication of this bid?

**YES / NO**

If yes, furnish particulars

.....  
.....

3.11 Are you, aware of any relationship (family, friend, other) between any other bidder and any persons in the service of the state who may be involved with the evaluation and or adjudication of this bid?

**YES / NO**

If yes, furnish particulars

.....  
.....

3.12 Are any of the company's directors, trustees, managers, principle shareholders or stakeholders in service of the state?

**YES / NO**

If yes, furnish particulars

.....  
.....

3.13 Are any spouse, child or parent of the company's directors, trustees, managers, principle shareholders or stakeholders in service of the state?

**YES / NO**

If yes, furnish particulars

.....  
.....

3.14 Do you or any of the directors, trustees, managers, principle shareholders or stakeholders of this company have any interest in any other related companies or businesses whether or not they are bidding for this contract?

**YES / NO**

If yes, furnish particulars

.....

4. Full details of directors / trustees / members / shareholders.

FULL NAME	IDENTITY NUMBER	STATE EMPLOYEE NUMBER

**CERTIFICATION**

**I, THE UNDERSIGNED (FULL NAME)**

.....

**CERTIFY THAT THE INFORMATION FURNISHED ON THIS DECLARATION FORM IS TRUE AND CORRECT.**

**I ACCEPT THAT, IN ADDITION TO CANCELLATION OF A CONTRACT, ACTION MAY BE TAKEN AGAINST ME SHOULD THIS DECLARATION PROVE TO BE FALSE.**

.....  
Signature Position

.....  
Name of Bidder Date

- \* MSCM Regulations: “in the service of the state” means to be –
  - (a) a member of –
    - (i) any municipal council;
    - (ii) any provincial legislature; or
    - (iii) the national Assembly or the national Council of provinces;
  - (b) a member of the board of directors of any municipal entity;
  - (c) an official of any municipality or municipal entity;
  - (d) an employee of any national or provincial department, national or provincial public entity or constitutional institution within the meaning of the Public Finance Management Act, 1999 (Act No.1 of 1999);
  - (e) a member of the accounting authority of any national or provincial public entity;
  - or
  - (f) an employee of Parliament or a provincial legislature.

\*\* “Stakeholder” means a person who owns shares in the company and is actively involved in the management of the company or business and exercises control over the company.